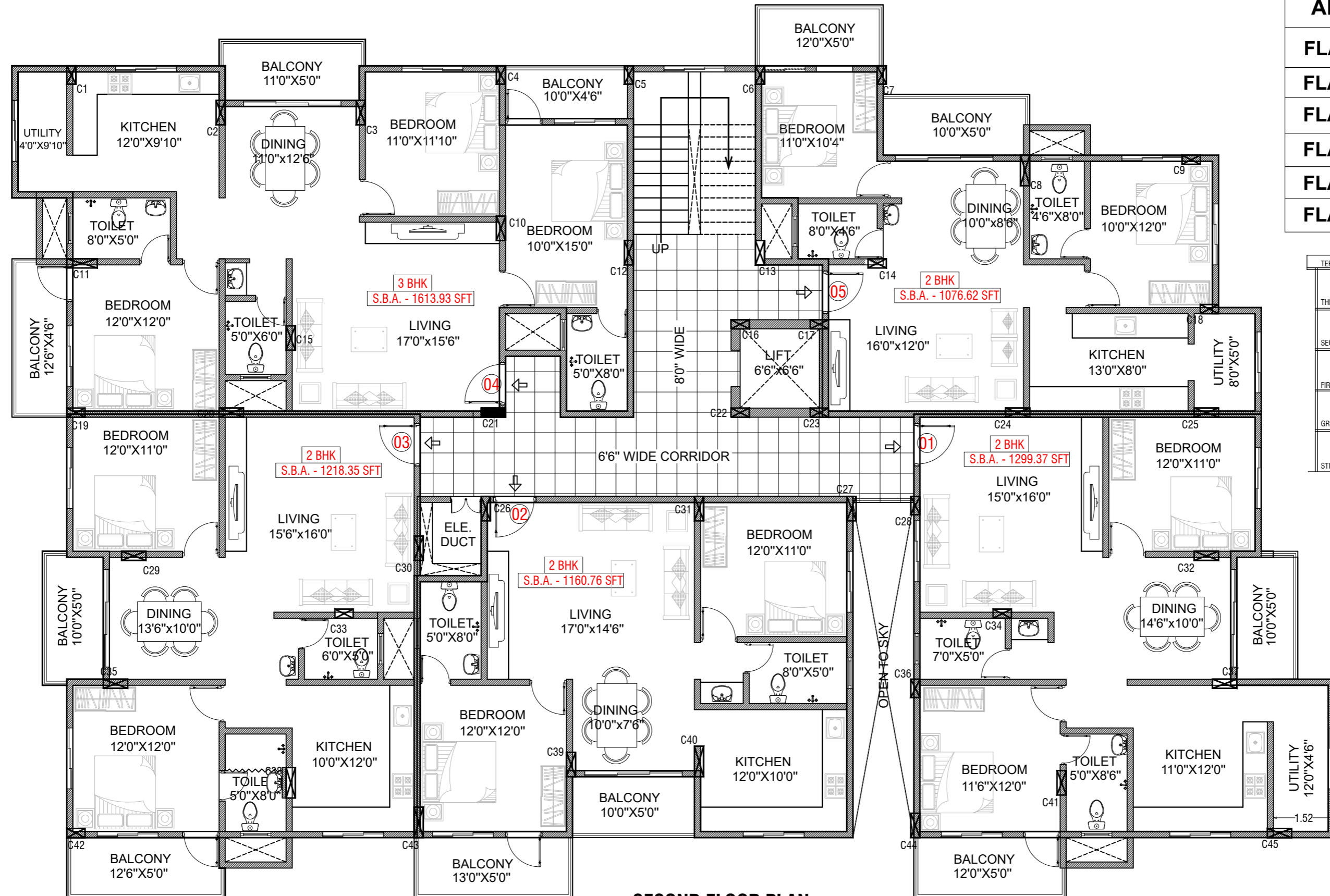


### AREA STATEMENTS

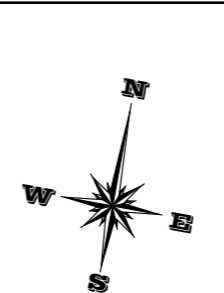
FLAT NO.	SBA IN SFT
FLAT 001	1299.37
FLAT 002	1160.76
FLAT 003	1218.35
FLAT 004	1613.93
FLAT 005	1076.62

TERRACE FLOOR	
THIRD FLOOR	Residential
SECOND FLOOR	Residential
FIRST FLOOR	Residential
GROUND FLOOR	Residential
STILT FLOOR	PARKING

RESIDENTIAL KEY SECTION



**SECOND FLOOR PLAN**



00	25.04.2022	FIRST ISSUE
NO	DATE	REMARK
DRAWN :	DRAWN	DWG NO : DWGNO
DESIGNED :	DESIGNED	SCALE : SCALE
APPROVED :	APPROVED	DATE : 25.04.2022
SHEET SIZE :	SHEET	REVISION : REVISION
FILE NAME: Y:\708-BOMBAY K M SHETTY\BRAHMAGIRI SITE\FINAL FLOOR PLAN\FLOOR PLAN.dwg		
DRAWING FOR		
APPROVAL	CONSTRUCTION	OTHER

TITLE:	<b>SECOND FLOOR PLAN</b>
PROJECT:	PROPOSED CONSTRUCTION OF RESIDENTIAL APARTMENT BUILDING AT BRAHMAGIRI. FOR - Mr. K.M. SHETTY
CONSULTANTS:	<b>A.G.ASSOCIATES</b> ARCHITECTS, ENGINEERS, TOWNPLANNERS & INTERIOR DESIGNERS AGA KANTILEVER, OPP NAIRKERE, NEAR BRAHMAGIRI CIRCLE, UDUPI - 576 101 PH: 0820-253 3855, 253 3866 www.agaudupi.com e-mail: info@agaudupi.com